



p 1.800.929.9247
 f 1.312.348.6163
 e adams.parts@adamselevator.com
 w adamselevator.com/handrails

CONTINUOUS SOLID FLAT BAR/ROUND RAIL

INTERACTIVE E-FORM

Choose a Style & Size

flat	round
<input type="checkbox"/> 1.5" x .375" AHCS1500 (L)	<input type="checkbox"/> 1.5" Diameter AHCR1500 (L)
<input type="checkbox"/> 2.0" x .375" AHCS2000 (L)	<input type="checkbox"/> 2.0" Diameter AHCR2000 (L)
<input type="checkbox"/> 3.0" x .375" AHCS3000 (L)	<input type="checkbox"/> 3.0" Diameter AHCR3000 S
<input type="checkbox"/> 4.0" x .375" AHCS4000 (L)	
<input type="checkbox"/> 6.0" x .375" AHCS6000 S	

Select a Finish

	Brushed	Polished*
Stainless Steel.....(S)	<input type="checkbox"/>	<input type="checkbox"/> (SP)
Bronze (#385 alloy).....(B)	<input type="checkbox"/>	<input type="checkbox"/> (B)
Yellow Brass #260 alloy (YB)	<input type="checkbox"/>	<input type="checkbox"/> (YBP)
Copper.....(C)	<input type="checkbox"/>	<input type="checkbox"/> (CP)

*Additional charges apply.

E-Form Instructions

To fill out e-form, click and type in highlighted form field areas. Use the Email button to send it. Click ends of rails to change styles. If preferred you can print this form, fill out by hand and fax it to us.

Accurate & Proper measurements are YOUR Responsibility-TAKE CARE

Select a Sidewall Return

Round

Flat

L **R**

.....Straight.....

.....Bent.....

.....Bullet.....

Round Handrails Only

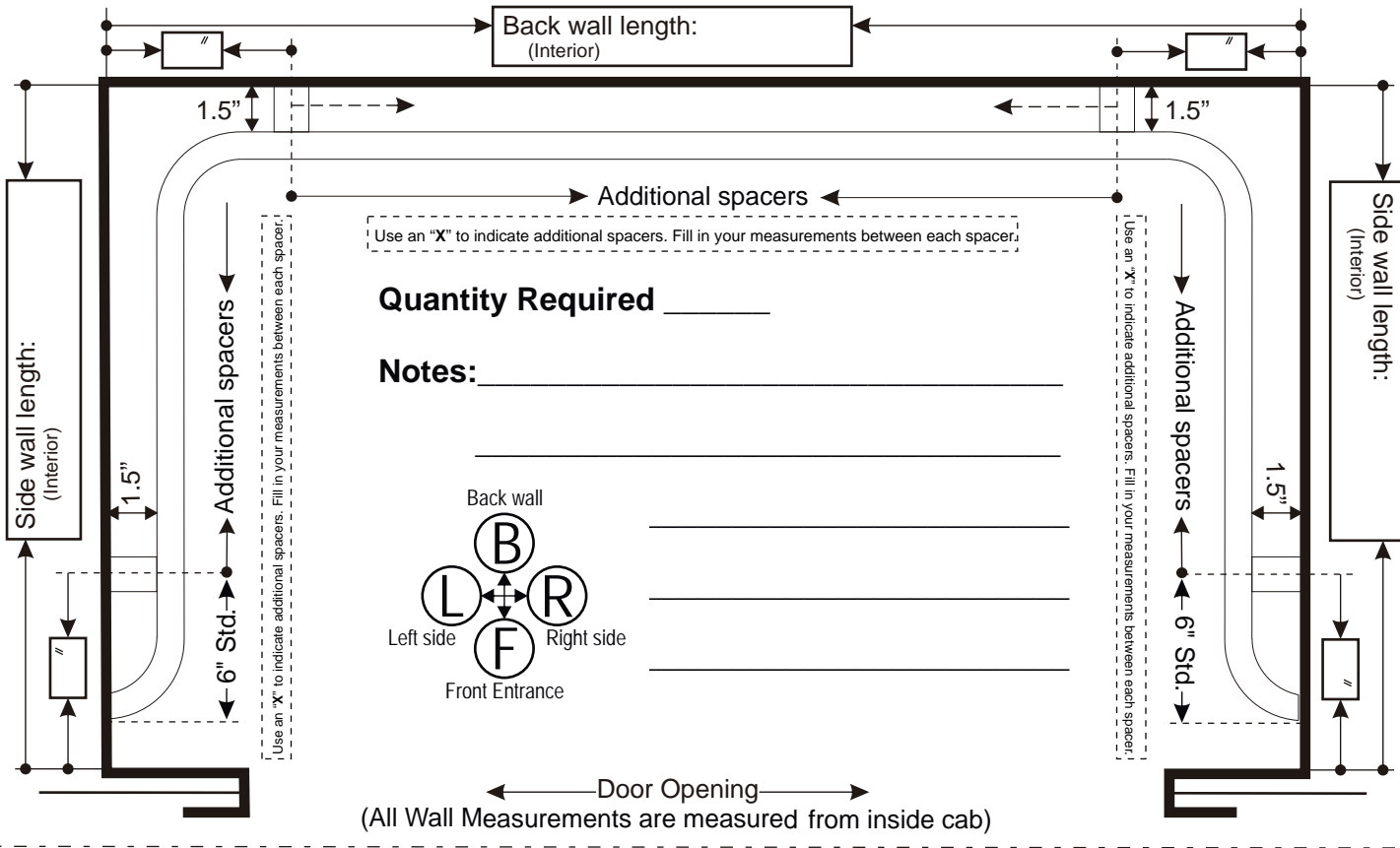
Select a Spacer Type

Exterior Cab Installation - Preferred standard spacer method of installation. Requires cab exterior access. Supplied bolt passes from cab exterior, through wall, then through spacer and threads into handrail. Bolt can be tightened securely, pulling cab shell and handrail tight together.

In Cab Installation (Removable)

FLAT BAR HANDRAILS: Split Spacer Assembly (In Cab Removable)
 Our most innovative design. The best option for in-cab installations. With spacers mounted to the wall, the handrail is raised, so the welded pins rest into the top saddles. The bottom half of the split spacers bolt into place, securing the handrail to the cab walls.

ROUND HANDRAILS: Saddle Mount Spacer (In Cab Removable)
 Our most innovative design. The best option for in-cab installations. The spacer mount is secured to the cab wall with our Toggler system. The handrail is lowered onto the spacer, and a bolt from the underside of the spacer fastens the handrail into the saddle.



Company: _____

Job Name: _____

Order #: _____ P.O.#: _____

Contact Name: _____

Contact E-mail: _____

Phone (____) ____ - ____ Fax (____) ____ - ____

SHIP TO ADDRESS: _____

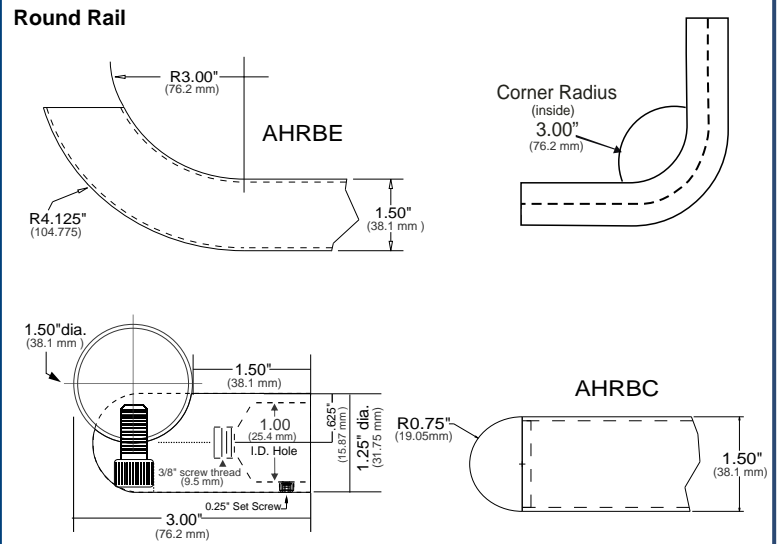
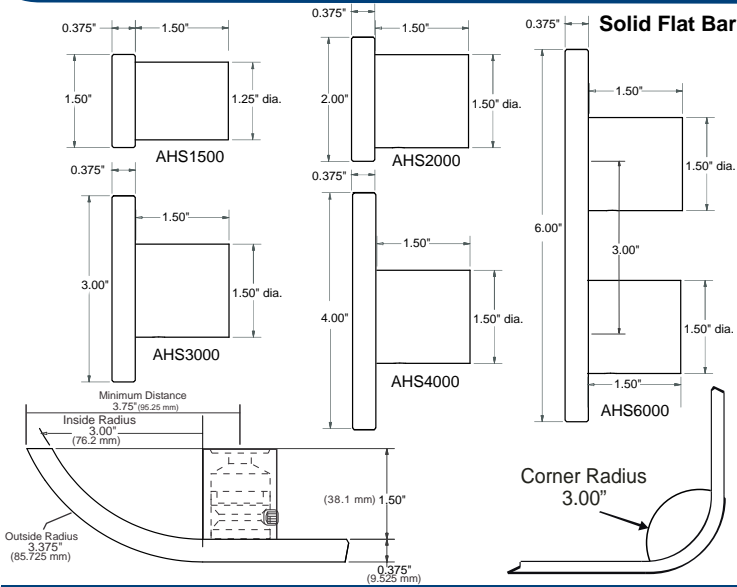
Order Notes: _____

Manufactured by

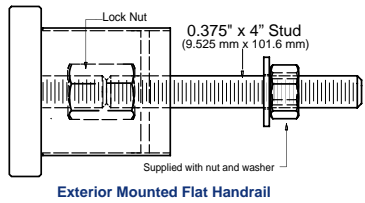


Handrail Worksheet

More Parts Delivered Faster



exterior cab installation spacer

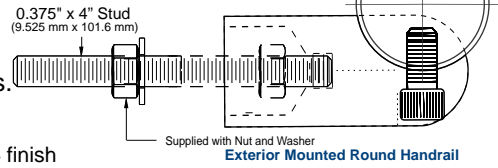


Exterior Mounted Flat Handrail

Pull-Out Values For 3/8" Stud

Handrail Threaded fastener engineered test data Pull-out values for removal of threaded fasteners from Lustre Products' handrails = 1509 lbs.

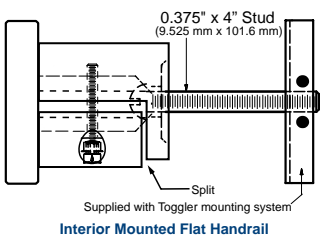
Exterior Installation Saddle Mount Spacer (round rails)



Aluminum #4 finish

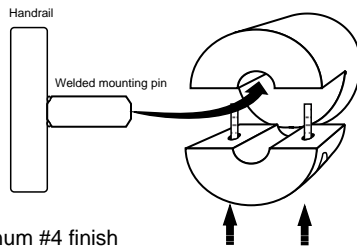
Exterior Mounted Round Handrail

in cab (removable) installation spacer



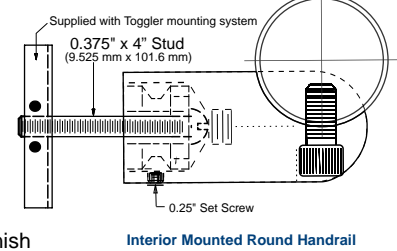
Interior Mounted Flat Handrail

Split Spacer Installation Diagram



Aluminum #4 finish

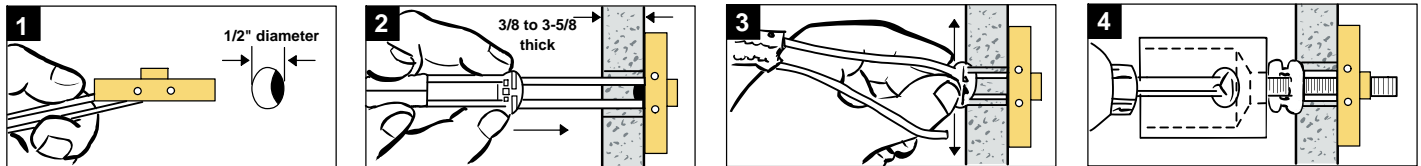
In Cab (Removable) Mounting Spacer



Aluminum #4 finish

Interior Mounted Round Handrail

In Cab Removable Handrail Spacer Installation Instructions



Pull-Out Values For 1/4"- 20 Bolt

265 lbs (120 kg) ultimate tensile load in 1/2" drywall 925 lbs (420 kg) ultimate tensile load in concrete block
 306 lbs (162 kg) ultimate tensile load in 5/8" drywall 1,283 lbs (583 kg) ultimate tensile load in steel plate

Tests by independent test laboratory show ultimate load. Industry safety standards recommend 1/4 of the values for actual applications. Age and conditions of substrate will cause load values to vary.

Care & Maintenance

Brass, Bronze & Copper Handrails

PLEASE NOTE: These handrails & components have a spray lacquer coating. To clean and maintain this lacquer coating: gently clean with a soft cloth, dampened with non abrasive soap and water. Brass or Bronze is a HIGH MAINTENANCE FINISH. Yellow metals will all naturally oxidize / tarnish with time and use. The acrylic metal lacquer coating WILL WEAR AWAY and remaining lacquer should be removed using lacquer thinner or other solvent. Cleaning handrail(s) with any chemical solution will directly soften and degrade the lacquer coating.

As the lacquer coating applied to your handrail(s) will wear, please note the following:

1. The original lacquer coating can be removed with standard xylene or lacquer thinner (available at most hardware stores - follow all related safety precautions)
2. Normal maintenance (polishing / buffing / Scotch-Brite satin finishing) procedures for Brass or Bronze will result in maintaining the #4 (brushed) or #8 (polished) finish.
3. You may prefer, at this time, to continue a program of hand maintenance to control oxidation as well as normal wear and tear using Scotch-Brite pads, Brasso, Miracle Shine, or other commercial metal polish.
4. If re-coating of the handrail is preferred, standard commercial spray lacquer is recommended as a versatile means of reducing the effects of oxidation.

THIS LACQUER COATING IS NOT WARRANTED. The lacquer on the handrail will degrade from normal use and typical wear and tear. It will require regular maintenance to control the effects of oxidation.

The workmanship and quality of these products is a reflection of our dedication to you.... our customer.